

## Using Pocket Merchant on Pocket PC

Pocket Merchant connects to the bottom connector of your Pocket PC Device (PPC). In order for Pocket Merchant to function properly and with out interruption in your software, you should first disable Auto-ActiveSync. This will avoid the ActiveSync software from running when you turn on the connected Pocket Merchant.

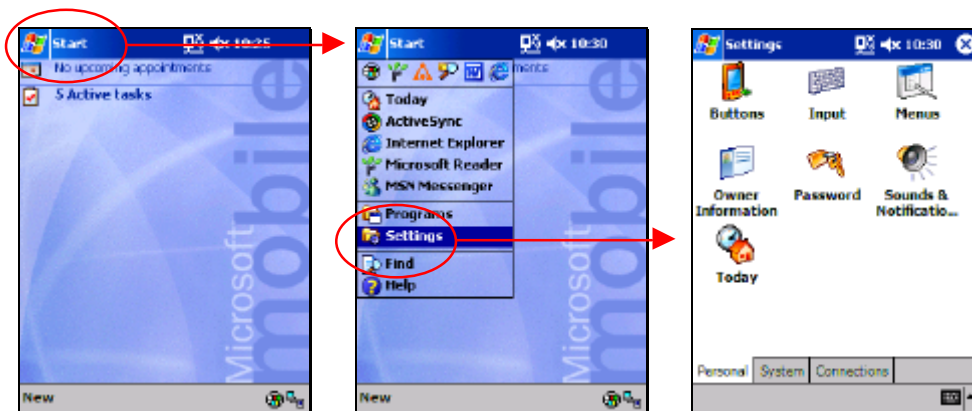
On Pocket PC Phone devices (i.e., O2 XDA, **T-Mobile**, and Dopod), **you must disable the IR Auto-Receive function** since this channel is used as a second communications port for the Pocket Merchant (the first communications port is used for the Phone Connection).

### To disable Auto ActiveSync:

1. Locate and run the [ActiveSync](#) software  
You can find it in the [Programs Directory](#) (Start > Programs > Hotsync)
2. Unselect the [Always Connect](#) or [Enable Synchronization when cradled](#) feature.  
In PPC 2002, click on the [Tools](#) menu and select [Options...](#)

### To disable IR Auto-Receive:

1. Go to the Settings Folder



2. Select the [Connections](#) tab and choose the [Beam](#) icon
3. Uncheck [Receive all incoming beams](#)

